

# Wildlife Photography Expanding Your Horizons



# The choice of framing



# Wide shot

- Use when the setting is beautiful
- Shows the animal's environment
- Prevents the subject from appearing trapped in the frame
- To do so, zoom out or step back



















# Portrait (Close-up)

- Use when the animal accepts our presence
- Demonstrates the animal's trust
- Can be a lifesaver when the surroundings aren't ideal
- Allows you to show all the details















# How to add depth to your images

- Choose a small aperture
- Position yourself to get a distant background
- Use elements to create foreground blur













# How to Use Light to Your Advantage

- Blue hour
- Golden hour



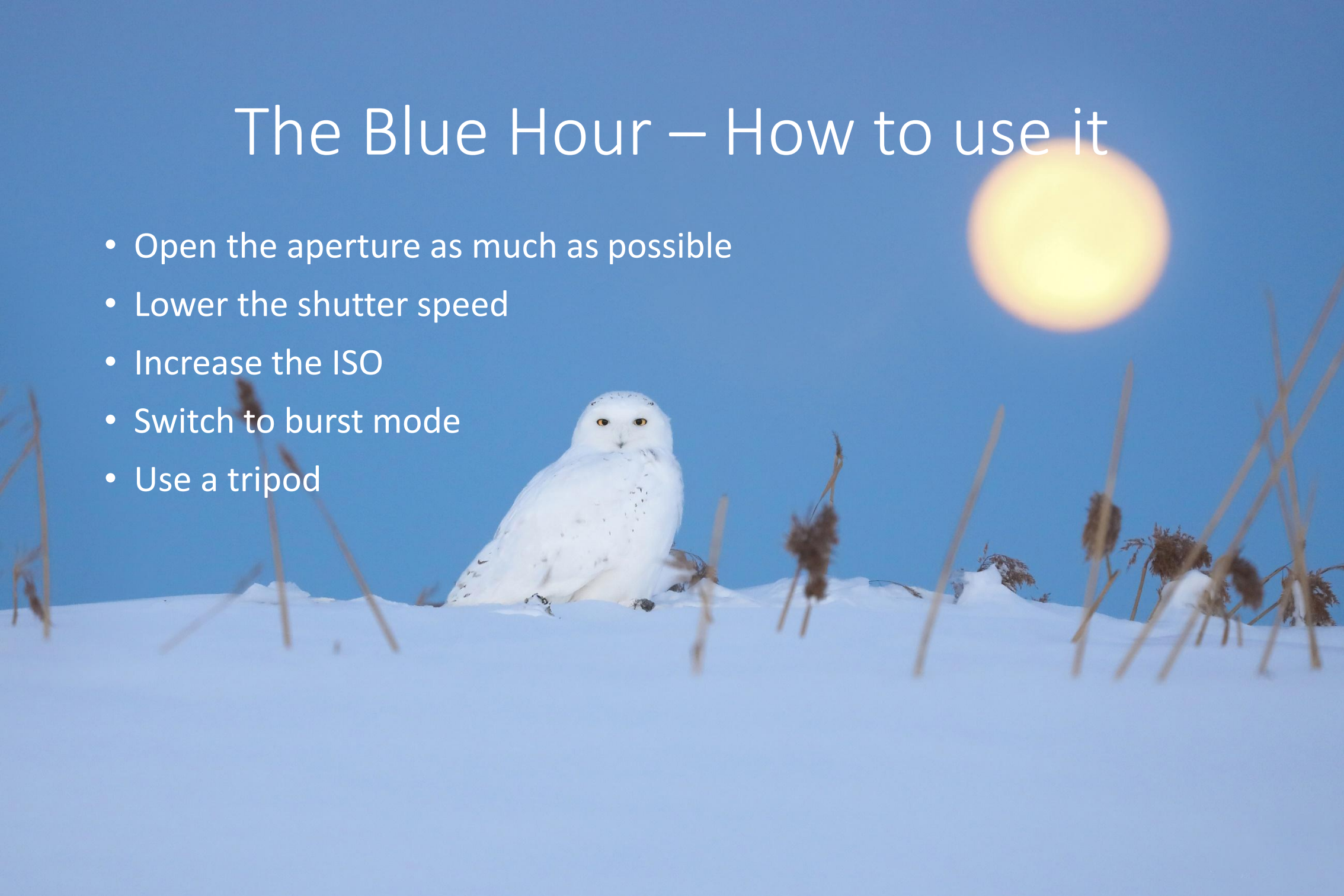
# Blue hour

- The 30 minutes before sunrise
- The 30 minutes after sunset
- Light that is more difficult to work with
- Used for photographing nocturnal animals
- Adds bluish tones to images
- Enhances contrast
- Helps create a dramatic effect



# The Blue Hour – How to use it

- Open the aperture as much as possible
- Lower the shutter speed
- Increase the ISO
- Switch to burst mode
- Use a tripod











# Golden hour

- First hour after sunrise
- Last hour before sunset



# Golden Hour

## Which Angle Should You Choose

1. Sun behind you
2. Backlighting
3. Side lighting



# Sun behind you

- The most commonly used angle
- Adds a beautiful golden tone to images
- Very soft light





M

MAXIME LEGAREVEZINA  
PHOTOGRAPHY







# Backlight

- It opens the door to a whole new world
- Reveals details that would otherwise remain invisible



# Backlight

Highlight the subject's silhouette



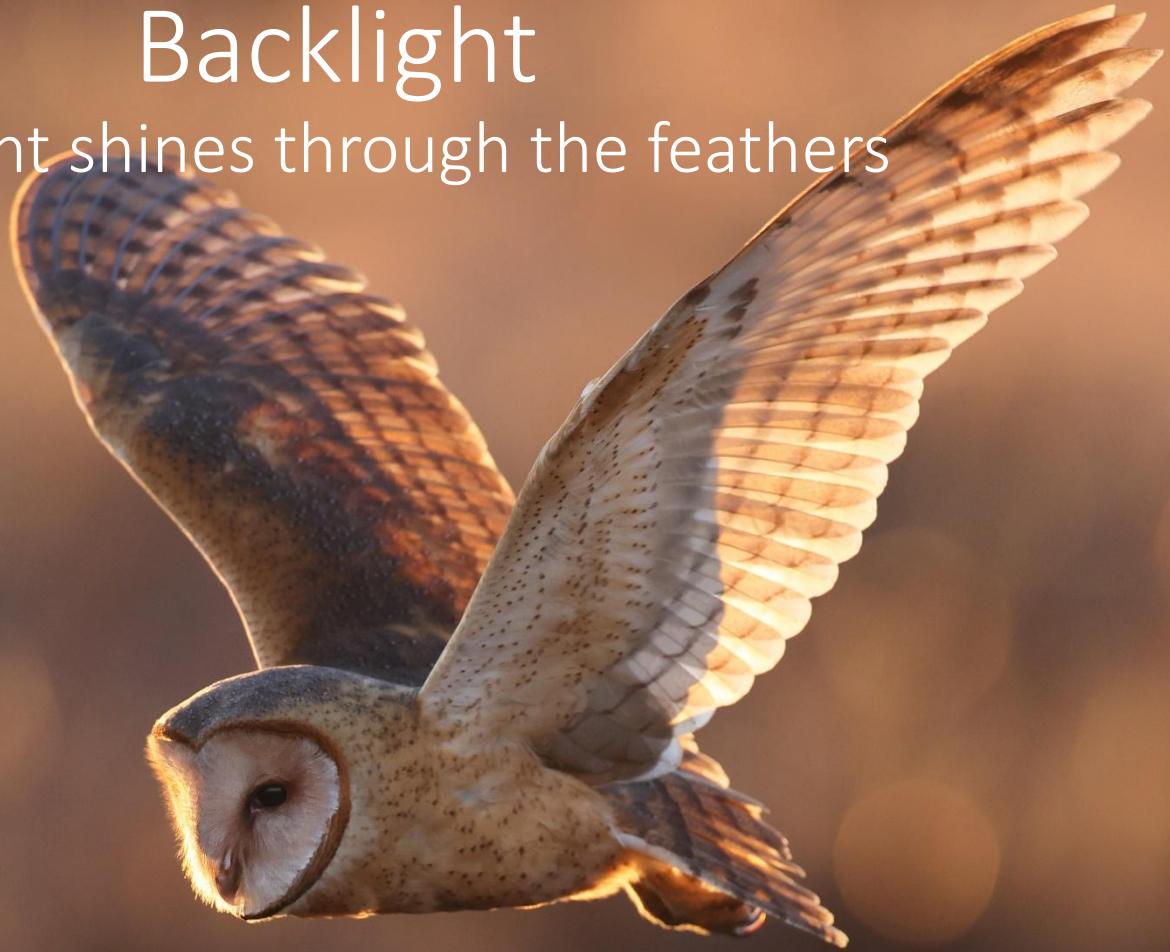






# Backlight

Backlight shines through the feathers









# Backlight

Shines through the vegetation







# Backlight

Reveals the breath of animals in cold and humid conditions







Backlight  
Creates beautiful bokeh circles







# Backlight

Brings out details that would otherwise remain invisible









# Backlight

Highlight the mist



ML

MAXIME LEGAREVEZINA  
PHOTOGRAPHY



# Side lighting

- A balance between backlight and light behind you
- Adds depth to images
- Used to get darker backgrounds







# Dark Background

- Clean image that highlights the subject
- Subject in the sun
- Background in the shade
- Underexpose
- Darken in post-processing









The end!

